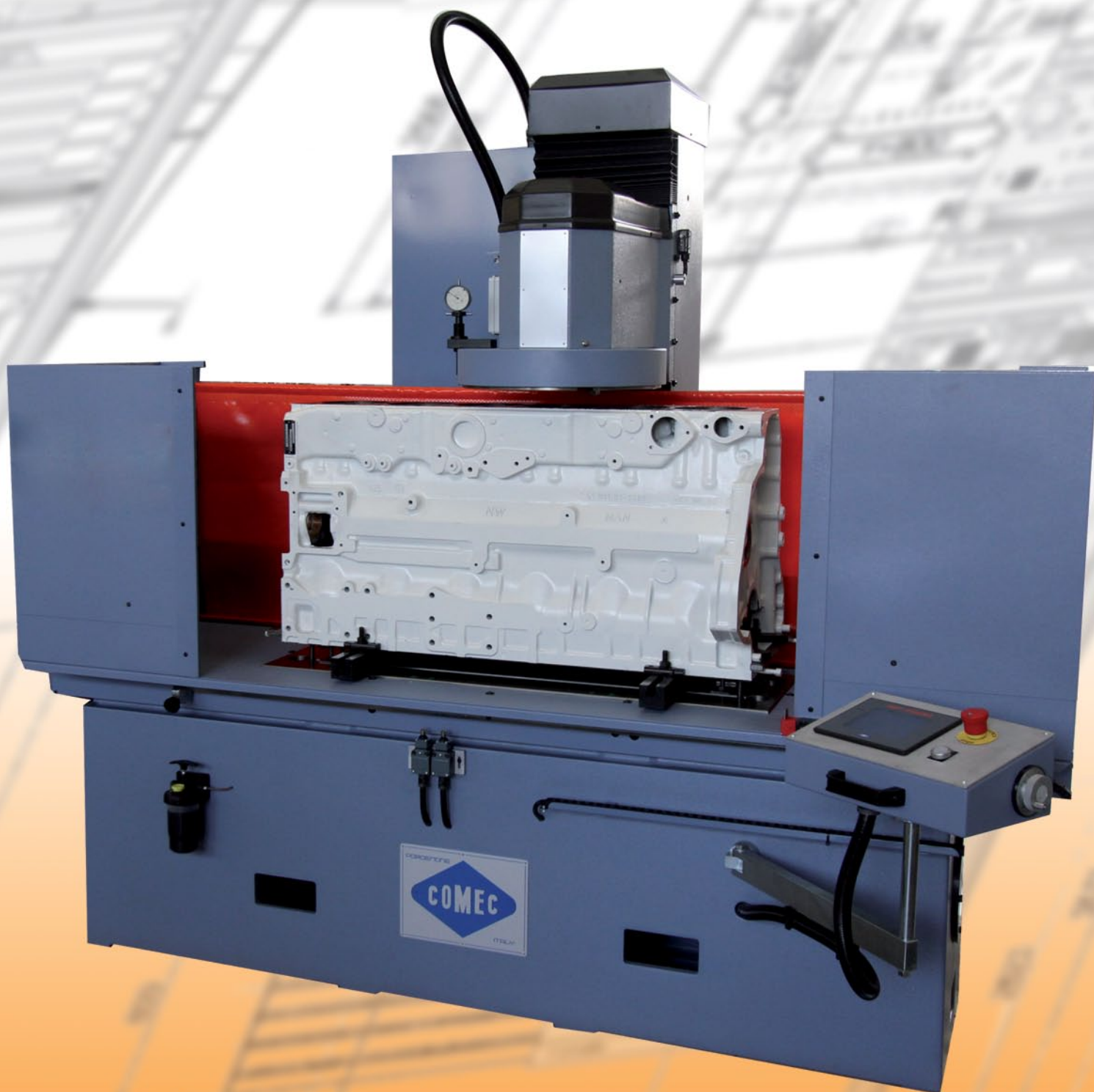


COMEC

RP 1400
PLC



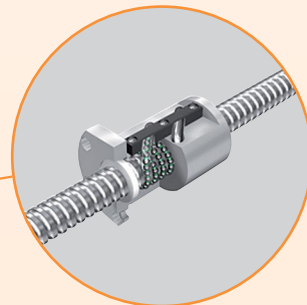
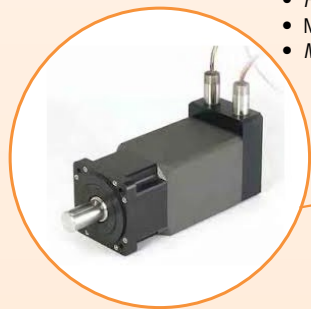
SPIANATRICE PER TESTATE E MONOBLOCCHI MOTORE

CYLINDER HEAD AND BLOCK RESURFACING MACHINE

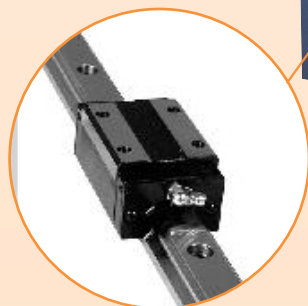
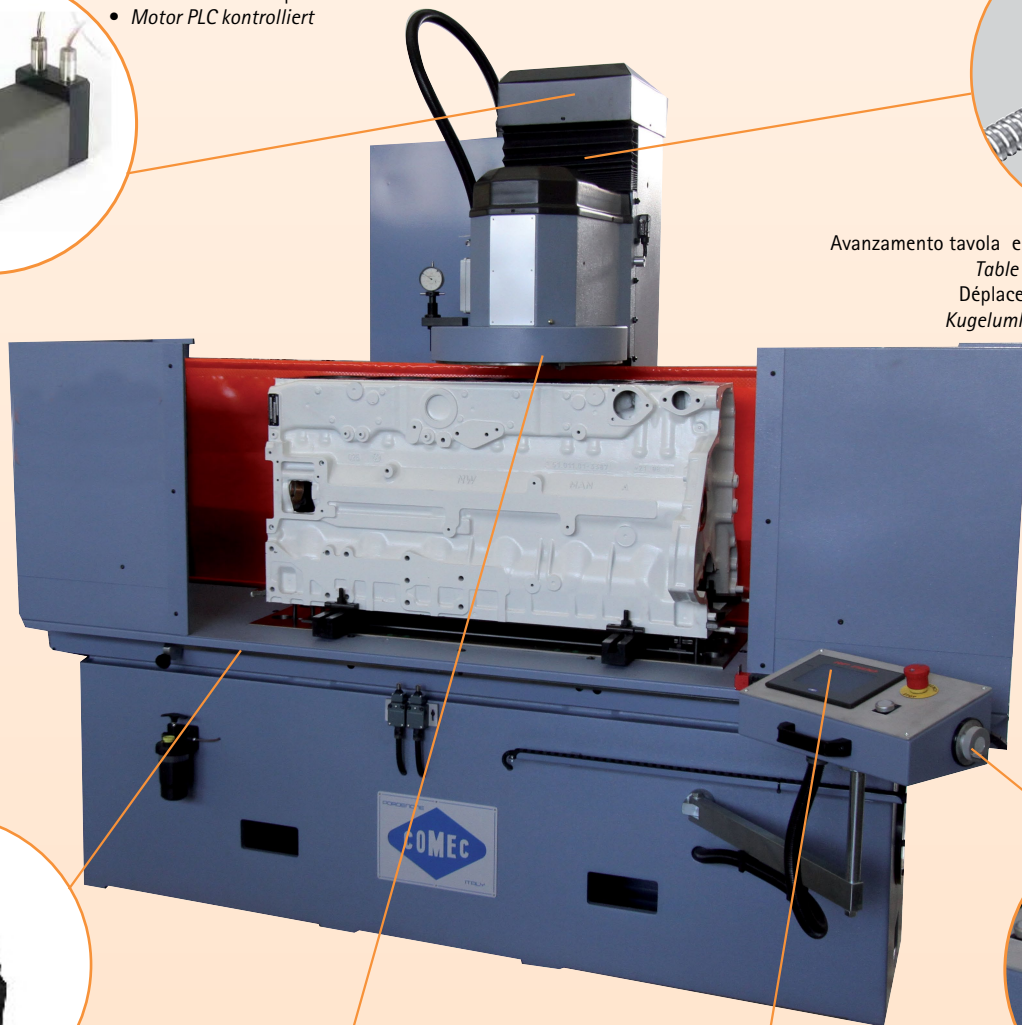
MACHINE A PLANER CULASSES ET BLOC-MOTEURS

ZYLINDERKOPF-UND MOTORBLOCK DREH-UND PLANMASCHINE

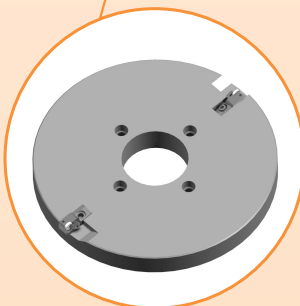
- Motore brushless controllato da PLC
- Head motor controlled by PLC
- Motor commandé par PLC
- Motor PLC kontrolliert



- Avanzamento tavola e testa con vite a ricircolo di sfere
- Table and head feed by ball screw drive
- Déplacement de la table avec vis à billes
- Kugelumlaufspindel Tischvorschub Antrieb



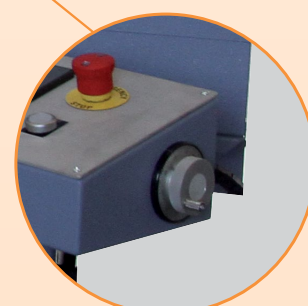
- Avanzamento tavola su guide lineari a ricircolo di sfere
- Table feed on linear ball screw drive
- Déplacement de la table sur des guides linéaires
- Tischvorschub auf Linearführungen



- Piatto fresa con inserto CBN o PCD
- CBN or PCD milling plate
- Freise a plaquette CBN/PCD
- CBN oder PCD Fräsen Platte



- Pannello comandi touch screen
- Touch screen control panel
- Tableau des commandes touch screen
- Touch Screen Tafel



- Volantino elettronico
- Electronical wheel
- Manivelle électronique
- Elektronisches Handrad

Dati tecnici	Specifications	Donées techniques	Technische Daten	
Corsa tavola	Table travel	Course de la table	Tischverfahrweg	1400 mm
Max lunghezza lavorabile	Max working length	Max longueur de travail	Max. Breitenkapazität	1195 mm
Max larghezza lavorabile	Max working width	Max largeur de travail	Max. Tischbreite	410 mm
Min - Max altezza lavorabile	Min - Max working height	Min - Max hauteur de travail	Min - Max. Höhenkapazität	190 - 710 mm
Superficie utile tavola	Useful table surface	Surface de la table	Tischoberfläche	1100x230 mm
Diametro fresa	Mill diameter	Diamètre fraise	Durchmesser Fräsen Platte	405 mm (16")
Velocità rotazione mola	Spindle rotation speed	Vitesse de rotation meule	Spindelgeschwindigkeit	500÷1200 RPM
Velocità variabile avanzamento tavola	Variable table feed speed	Vitesse de avancement variable de la table	Stufenlose Tischvorschubgeschwindigkeit	0÷1500 mm/min
Motore testa	Spindle motor	Moteur tête	Spindelmotor	2.2 kW
Motore tavola	Table motor	Moteur table	Tischmotor	0.75 kW
Coppia motore testa	Feed torque motor	Moteur tête	Kopfaufzugmotor	1.27 Nm
Dimensioni (LxLxH)	Dimensions (LxWxH)	Dimensions (LxLxH)	Abmessungen (LxBxH)	2500x1000x1900 mm
Peso	Weight	Poids	Gewicht	1410 kg